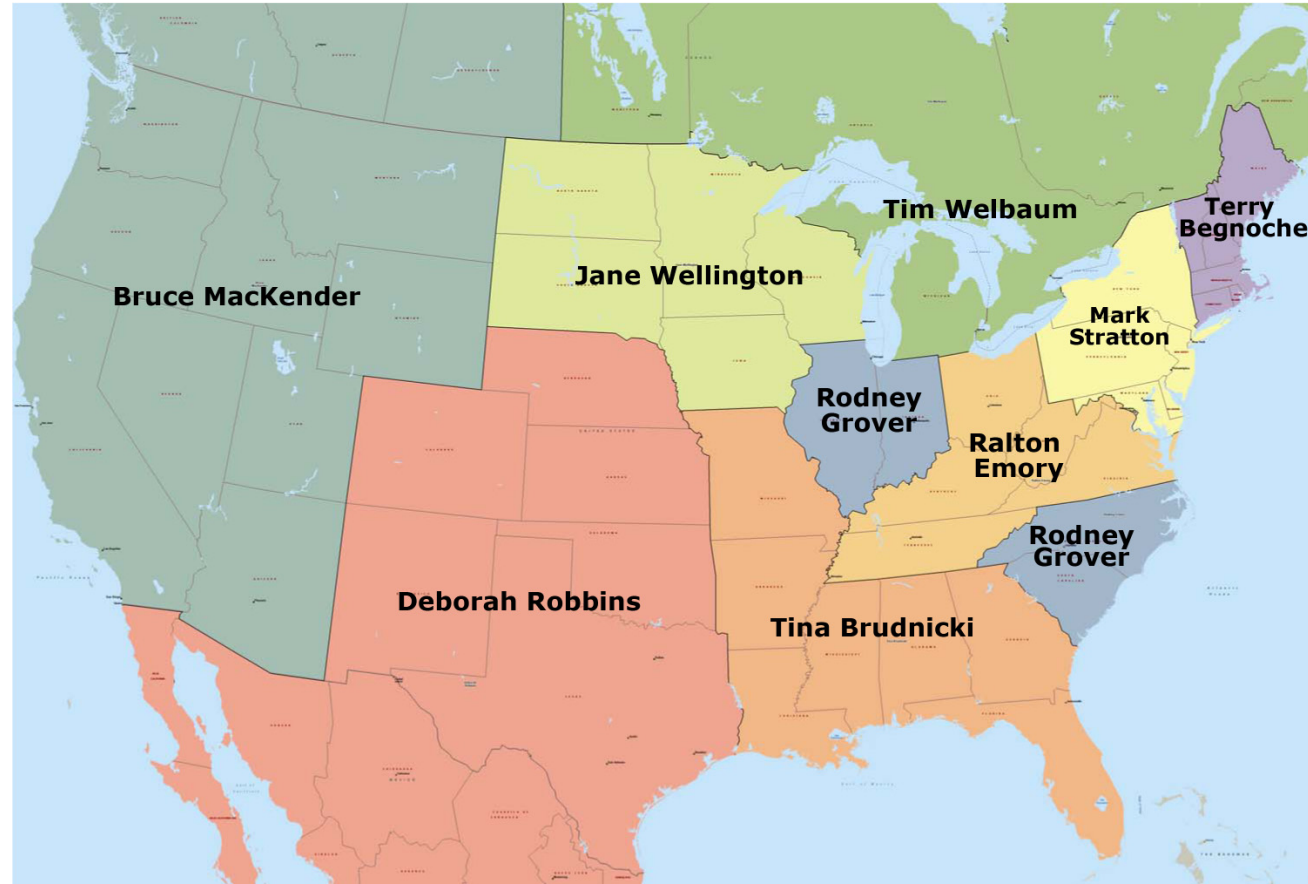


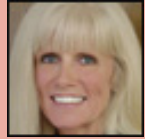


WHERE MANUFACTURING COMES TOGETHER™

Pathways for Engagement



Bruce MacKender
503.631.7955
bmackender@sme.org



Deborah Robbins
313.587.1135
drobbins@sme.org



Jane Wellington
313.425.3288
jwellington@sme.org



Tina Brudnicki
727.467.9355
tbrudnicki@sme.org



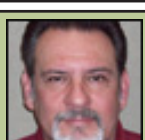
Ralton Emory
313.587.2025
remory@sme.org



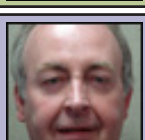
Rodney Grover
313.425.3222
rgrover@sme.org



Mark Stratton
313.425.3307
mstratton@sme.org



Tim Welbaum
313.425.3232
twelbaum@sme.org



Terry Begnoche
313.425.3229
tbegnoche@sme.org

SME's **Member and Industry Relations Managers** are your technical community contact and local chapter support person. The colors and names on the map correspond to the individuals on the left. Listed below are the technical communities that each of the Member and Industry Relations Managers are responsible for:

Bruce MacKender – **Plastics, Composites & Coatings**

Deborah Robbins – **Industrial Laser**

Jane Wellington – **Rapid Technologies & Additive Manufacturing**

Tina Brudnicki – **Forming & Fabricating**

Ralton Emory – **Automated Manufacturing & Assembly**

Mark Stratton – **Manufacturing Education & Research**

Terry Begnoche – **Product & Process Design and Management**

Rodney Grover – **Machining & Material Removal**

SME Board of Directors

Establishes the Society's business policies and strategic direction.

Member Council

Formulates recommendations to the Board of Directors relative to Society membership recruitment, retention and engagement.

Manufacturing Enterprise Council (MEC)

Serves SME and the manufacturing community by recommending manufacturing processes or technology areas for the development of new products and services. The MEC monitors the health and well-being of SME's Technical Community Network.

Volunteer Leaders' Toolkit

Contains eight separate areas that are designed to help you, the volunteer leader, be more effective at managing a chapter, tech group or community.

SME Strategic Plan 2012

Goal 1: Knowledge

SME will be the premier manufacturing knowledge resource throughout the global manufacturing community.

Goal 2: Education

SME and the SME Education Foundation will be known as advocates for careers in manufacturing and a leading resource for manufacturing education.

Goal 3: Membership

SME will actively engage people and companies in their communities of interest to add value for the member.

Goal 4: Brand

SME's brand creates the image of the most valued source of manufacturing knowledge.

Goal 5: Lean & Effective

SME will be both lean and effective.

Goal 6: Knowledge Delivery

SME will deliver knowledge in ways that meet the needs of members and customers.

SME Membership Staff



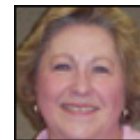
Mark Tomlinson, CMfgE, EMCP
Executive Director & General Manager
313.425.3100
leadership@sme.org



MANUFACTURING ENTERPRISE COUNCIL LIAISON
Debbie Holton
Director, Industry, Community, and
New Product Development
313.425.3132
dholton@sme.org



Natalie Lowell, CMfgT
Manager, Member and Industry Relations
313.425.3129
nlowell@sme.org



MEMBER COUNCIL LIAISON
TCN LEADERS SUBCOMMITTEE LIAISON
Margaret Satoh
Manager, Member Services
313.425.3032
msatoh@sme.org



CHAPTER ENHANCEMENT SUBCOMMITTEE LIAISON
STUDENT RELATIONS SUBCOMMITTEE LIAISON
Dave Moulton
Member Services Manager
313.425.3213
dmoulton@sme.org

Administrative Support



Chris Werth
313.425.3220
cwerth@sme.org



Karen Renaud
313.425.3148
krenaud@sme.org

Membership Consultants Needed!

SME encourages its members to be actively involved in the Society. There are currently Membership Consultant positions available. If you are interested in volunteering, please contact your Member and Industry Relations Manager.