



*Shop  
System™*

---

Everything You Need to Manage  
Your Shop ... Profitably.

*shop*tech™  
Software

The Authority on Shop Floor Control.

# Created in a shop . . . by shop people

The E2 Shop System enables shop owners to effectively control all aspects of shop activity, while simultaneously and effectively managing profitability. Whether it's your front office or shop floor that you're concerned about, the fully integrated E2 Shop System takes the uncertainty out of shop management.

Development of the E2 Shop System dates back to 1984. Our shop specific software was developed from an actual shop experience, real-life shop situations, shop know how and shop needs. Both shop owners and shop users participated in the creation of this unique software. Today, shop owners and shop users continue to play a vital role in transforming suggestions into product enhancements.

The E2 Shop System includes features found in no other software product of its kind. The features we have included make our system incredibly comprehensive, yet user-friendly. You will have the information you need in a relevant, consistent and informative format in a matter of seconds.

Because our system is 100% Windows-based, it is incredibly easy to learn and use. "Point and Click" convenience appears throughout the system, virtually eliminating the need to rely on a keyboard. The E2 Shop System gives you the power, flexibility and speed to access all the information you need to manage your shop . . . profitably.

Due to this experience, we can honestly and proudly say that we deliver a product like no other.



**“It's nice to have a package that does everything for you... If you're serious about growing your business, you need a system like E2.”**

Rick Hall - *Hall Machine*



**“After looking at several shop control systems, I knew what a system should do. E2 does everything I want, at a price that fits my budget.”**

George Rogers -  
*Kehr-Buffalo WireFrame*

# Estimating & Quoting

Accuracy is the key element in ensuring your profitability. The E2 Shop System takes the uncertainty out of estimating by utilizing pre-set rates for:

- Burden Rate
- Labor Rate
- Quantity Breaks
- Set-up Time (Up to 10 Different Rates Available)
- Run/Cycle Time (Up to 10 Different Rates Available)
- Outside Services
- Sales Commissions

Any estimate you create in the system will automatically use these pre-set values. Do you have a rush order, or special needs on a job? Simply change these rates “on the fly” to fit those special needs. Future estimates will default to the pre-set values.

Once you’ve entered your part specific information into the system, the system will:

- Compute the cost to produce the part
- Compute prices for multiple quantity breaks per part
- Allow you to adjust profit margins at each quantity break
- Allow you to create a quote with the single click of a button
- E-mail or fax your quote directly from your workstation (the E2 Shop System contains both an internal and external messaging system. External Messaging is powered by Microsoft® Outlook Express)

## Getting the order to the floor...

You’ve received the go ahead from your customer. Now you have to get the order into the system and out to your shop floor. The E2 Shop System allows you to turn a quote into an order within a matter of seconds with “Point and Click” ease. Any job documents required for the job can be attached to the order with the same “point and click” convenience allowing you to create a complete job folder.



Line	Work	Work Center / Description	Setup Time	Run Time	Cost Price	Disc	Description
1	Work	3334	0.25	H			spring steel .3334 end
10	Work	LADPH	0.58	H	38.0000	P	varial at lat table, such as, stainless
20	Work	EBH	0.25	H	4.0000	H	lat center
30	Work	FRB		H	58.0000	P	vibway abut
40	Work	BGP	0.15	H			map
50	Work	EDV		H			2 in box ship
60	Work	EDM		H			Development
70	Work	ENG		H			Engineering
80	Work	BGP		H			Inspection
	Work	HW		H			Inventory
	Work	LASER		H			Laser
	Work	MACH		H			Machining
	Work	MARL		H			Marking
	Work	PHS		H			Planation
	Work	FEW, TRBL		H			Flaw, Treading
	Work	SALES		H			Sales
	Work	SEP		H			Shipping
	Work	ETS		H			Flaw Check
	Work	TME		H			Time
	Work	TRB		H			Treading
	Work	WAB		H			Welding
	Work	WELB		H			Welding

## Features include:

- Extensive note or memo fields for job specific notes and part descriptions
- Customized routing sheets that detail the movement and progress of a part from machine to machine or to and from an outside service
- Ability to copy full or partial routing sheets from previous jobs
- Output of supporting documents such as AutoCAD™ drawings, inspection forms or documents from more than 160 other applications programs
- Default options that will generate a pre-set job folder for every order
- Job Traveler forms that give part numbers, notes, delivery dates, quantities, part history and bar coding

WINDOWS is a registered trade name of Microsoft Corporation

## Additional Features Include:

- Billing rates can be entered with time ticket records for true time and material billing
- Each workcenter can have its own unique efficiency rate specified when routing a part. This is especially useful on difficult and unique jobs
- Each Workcenter step may have its own scrap percentage specified. Therefore, correct starting quantities are factored in order to yield the correct order quantity
- The E2 Shop System allows for unlimited multi-level bill of materials
- Job Numbers are automatically incremented with each line item on an order. This saves you time and prevents you from overwriting a job and losing it within the system
- Materials may be allocated to the job during order entry, ensuring any available inventory is accurately reported

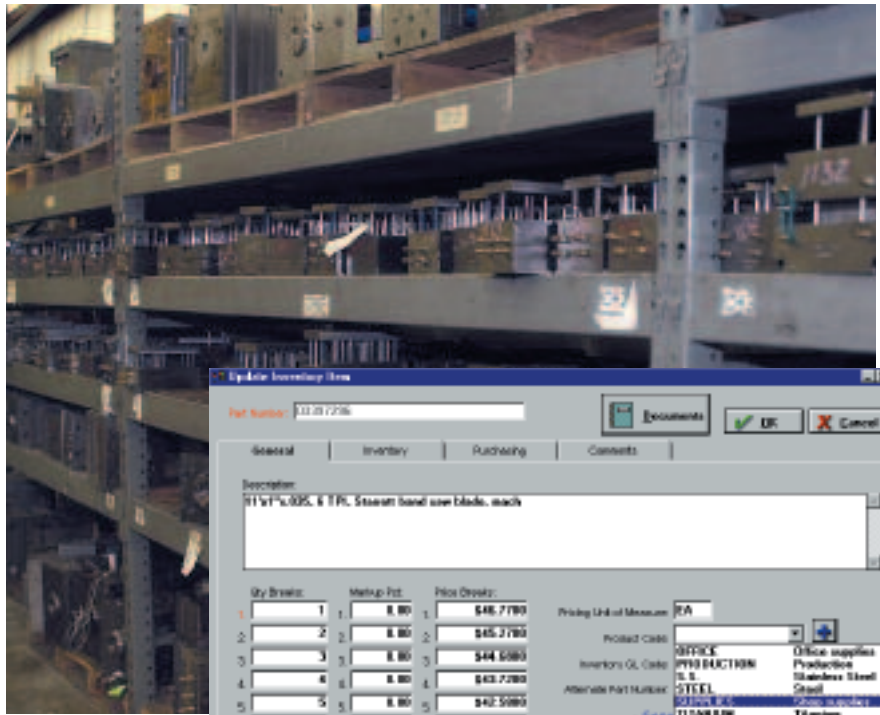
“I love the ability to copy quotes and send them quickly via the Internet – it makes us look professional, and has helped us double our business.”

Kevin Delk - Delmar Company

# Inventory & Purchasing

Whether you need raw materials or finished goods, the E2 Shop System handles inventory and purchasing in a snap. Each part or material number can be stored alpha, numeric, or with special characters. In addition, each inventoried item can be stored in multiple bin or lot locations. When inventoried items are allocated to a job or finished goods are sold from inventory, the E2 Shop System stores the history of where the raw materials or finished parts were pulled from. This eliminates the guesswork when quality control becomes an issue.

You can easily generate your Purchase Order with “Point and Click” convenience. If you want to shop around for the best prices, you can issue an RFQ to a variety of vendors to determine your best price.



## Quality System

E2 Quality is a fully integrated quality system that manages specific areas of engineering and supply-chain activities for the sole purpose of improving business performance and profitability. E2 Quality addresses quality assurance and activities with regards to customers, vendors, employees, work centers, tooling and document numbering and control.

### E2 Quality System

- Effective quality management supports business growth and improves customer satisfaction through lean manufacturing and consistent performance.
- Easily collect, control and analyze quality data.
- Reduce production costs by identifying quality problems earlier in the production process.
- Maintain consistent workflow from engineering through final delivery to the customer.
- Identify and control possible problems before they affect due dates or quality ratings.
- Share quality information and encourage team collaboration.
- Cut down on rework, returns and complaints.
- Schedule and track all preventative maintenance.

“E2 takes the guesswork out of our materials purchasing. We know how much we need and when we need it. It’s better for us and better for our suppliers.”

Dayne Perruzzi - PMS Manufactured Products

“The new quality module has been a great benefit that allows us to use E2 and still be ISO compliant. We enter data in E2 for non-conforming materials, RMA’s, corrective actions, and much more.”

Nancy Duff - Johnson Precision, Inc.



# Scheduling & Tracking



Part Name	Part Desc	Mar 05/07	Tue 05/07	Wed 05/07	Thu 05/07	Fri 05/07	Sat 05/07
10000000	10000000	100%	100%	100%	100%	100%	100%
10000001	10000001	100%	100%	100%	100%	100%	100%
10000002	10000002	100%	100%	100%	100%	100%	100%
10000003	10000003	100%	100%	100%	100%	100%	100%
10000004	10000004	100%	100%	100%	100%	100%	100%
10000005	10000005	100%	100%	100%	100%	100%	100%
10000006	10000006	100%	100%	100%	100%	100%	100%
10000007	10000007	100%	100%	100%	100%	100%	100%
10000008	10000008	100%	100%	100%	100%	100%	100%
10000009	10000009	100%	100%	100%	100%	100%	100%
10000010	10000010	100%	100%	100%	100%	100%	100%
10000011	10000011	100%	100%	100%	100%	100%	100%
10000012	10000012	100%	100%	100%	100%	100%	100%
10000013	10000013	100%	100%	100%	100%	100%	100%
10000014	10000014	100%	100%	100%	100%	100%	100%
10000015	10000015	100%	100%	100%	100%	100%	100%
10000016	10000016	100%	100%	100%	100%	100%	100%
10000017	10000017	100%	100%	100%	100%	100%	100%
10000018	10000018	100%	100%	100%	100%	100%	100%
10000019	10000019	100%	100%	100%	100%	100%	100%
10000020	10000020	100%	100%	100%	100%	100%	100%

“Reduced lead time and fast response are critical in this industry. E2 has enabled us to better schedule the shop capacity, and track the jobs on the floor—all of which are enabling us to reduce our lead time to our customer.”

Mike Irion - Senga Engineering

Our Scheduling Whiteboard, which is accessed through our “Quick View” feature, allows you to view a snapshot of machine availability in a matter of seconds. On-line, real-time monitoring capabilities give you up to the minute status of:

- which machines are occupied
- which are idle
- which machines will be needed to finish parts already in production

The machine’s availability can be kept on your screen while you simultaneously allocate available time to the part being produced. The Scheduling Whiteboard can also be customized to view a specific day, week or month.

When allocating time to a job, users can specify forward or backward scheduling for a job in order to meet specific customer or shop requirements. In addition, users may specify that “time left” calculations be based on pieces remaining using the actual time accumulated during the job. This supplies a much more accurate “percent complete” figure.

Each Workcenter can have its own days available and shifts available specified. This allows the user to selectively enable workcenters for each shift and day of the week.

When your customer calls wanting the status of their parts, you will instantaneously be able to tell them where their parts are, what remains to be completed, and the schedule for finishing the work.

The E2 Shop System also contains a variety of job related reports including:

- Job Schedules
- Backlog Summaries
- Machine Loading
- Margin Summaries
- Hourly Rate Summary
- Order Entry Summary
- Production Summary
- Shipment Summary

Each report available within the system can be queried based on user specific criteria. You can look at all your jobs at once, or generate a report specific to a customer, part number, date range, due dates, etc.

# Data Collection/Time & Attendance

The E2 Shop System is so flexible that time tracking can be done in three different ways:

- Manual data entry from timecards
- Available “Touch Screen” data collection
- Available “Time Clock” data collection

In order to manually record time information, users may use the “time and attendance” feature built into the E2 Shop System to record “clock-ins” and “clock-outs” for daily attendance.

The “Time Ticket” feature built into the E2 Shop System allows users to record time information about a job. Through “Point & Click” convenience, users can enter:

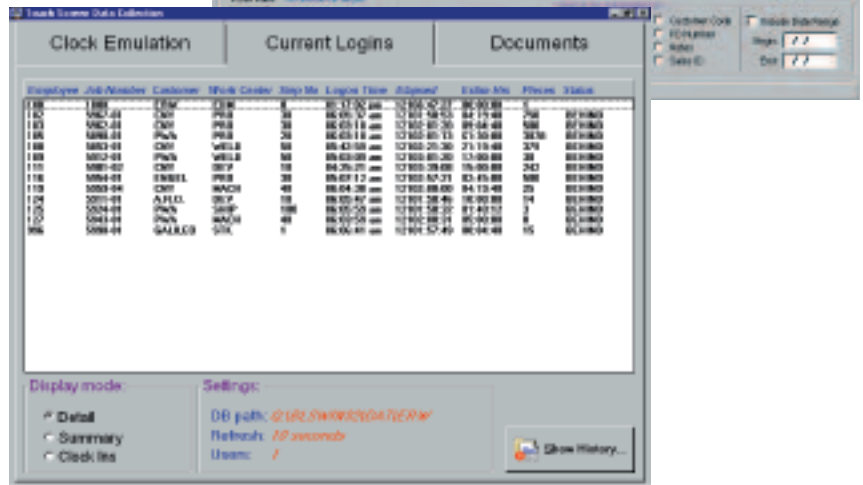
- Employee ID or code
- Job number
- Step number
- Workcenter
- Set-up times
- Cycle times
- Pieces Good/Pieces Scrapped

In order to automate this process, both the touch screen and time clock data collection systems allow employees to track their daily hours, hours specific to operations on a job, and machine time through simple on-screen or on-clock data entry. To make it even easier, laser gun readers are available which enable your employees to simply scan their bar-coded employee badges and job information from bar-coded routers.

Additional features include:

- Prevent time from being posted to a job that shipped two weeks ago.
- Get up-to-the-minute time tracking and job costing.
- Access real-time information from your shop floor.
- Know your labor costs with pinpoint accuracy.

The E2 Shop System can also be set up to flag and detect overtime. When an employees hours exceed 40 for the week, overtime can then be charged to the job being worked.



“ I particularly like the time and attendance features... we review them on a daily basis to see what we’re working on, and can make good decisions based on the information. ”

Ray Little - Calframax Technologies

# Shipping

Finished parts ready for shipping are detailed on a delivery ticket that includes:

- Quantity Ordered
- Quantity Shipped
- Back-order Quantities
- Shipping & Billing Addresses
- Purchase Order Numbers
- Carrier
- F.O.B. Point
- Complete Bill of Lading

The E2 Shop System is designed to display all line items that are being shipped. Furthermore, users can even cancel item quantities at the time of shipping. This eliminates the problem of having inert open orders in your system and is especially useful when customers have specified a +/- tolerance in shipping quantity.



# Accounting

Each E2 Shop System includes a complete and comprehensive accounting system specifically designed for job shops. However, our developers have ensured that all accounting functions within the system are based on Generally Accepted Accounting Practices. The accounting system includes:

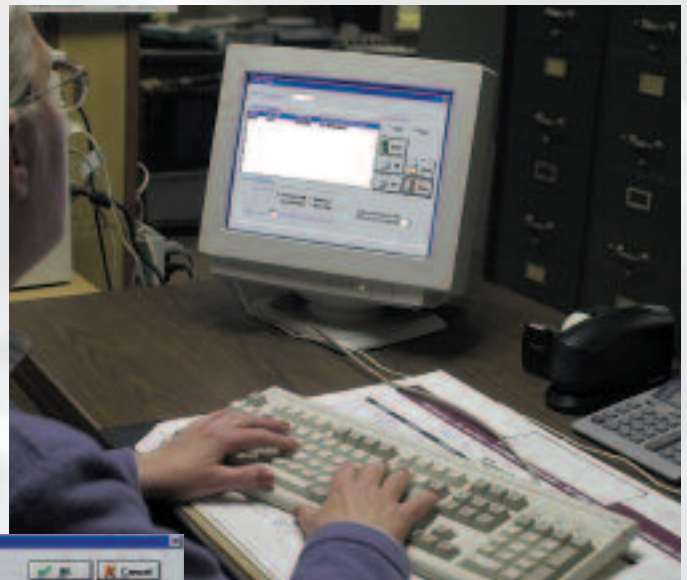
- Accounts Receivable
- Accounts Payable
- General Ledger
- Check Writing
- Payroll Interface

Since the E2 Shop System is fully integrated, all shop information is stored on the system, eliminating the need for double entry of data. In addition the following reports are available:

- Balance Sheets
- Aging Summaries
- Income Statements
- Check Summaries
- Bank Reconciliation
- Cash Flow Analysis
- Budget Analysis
- Trial Balances
- Vendor Invoice Summary
- Sales Summary
- Deposit Summary

Account	Debit	Credit	Balance	Account	Debit	Credit
1000000	430.00	430.00	88.88	430.00 2000		Accounts Payable
1000001	430.00	430.00	88.88	430.00 2000		Accounts Payable
1000002	430.00	430.00	88.88	430.00 2000		Accounts Payable
1000003	430.00	430.00	88.88	430.00 2000		Accounts Payable
TOTAL	1,720.00	1,720.00	355.52			

“Our accountant loves our E2 system. On January 1st, we just push a button to close the year—no waiting until April tax time, like other companies.”  
John Bauman - Advanced Machine Inc.



# Profitability

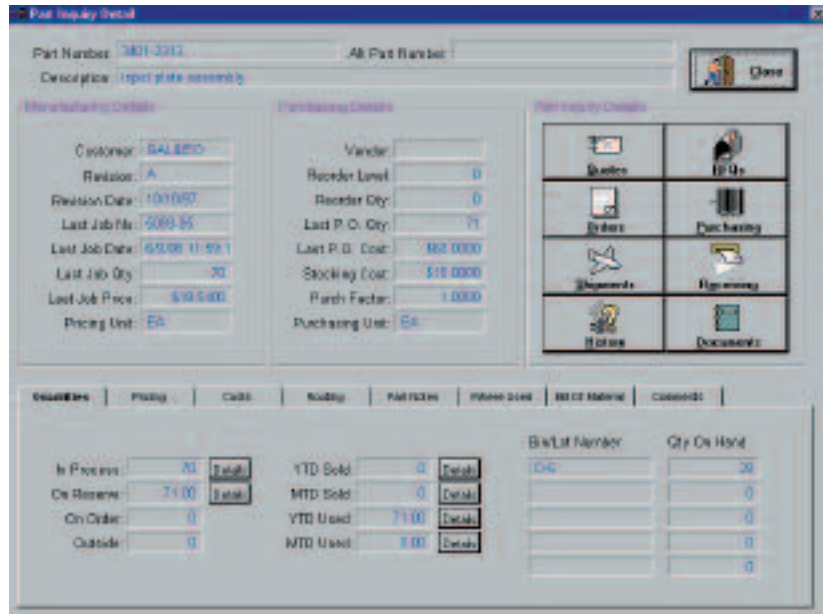
You've completed a job and shipped it to your customer. Better yet, a new customer wants you to make a similar part that you made for another customer three weeks ago. Are you making a reasonable profit? The answer to that question is only a click away with the E2 Shop System.

Within seconds, you can display:

- Past Job Information
- Labor Rates
- Burden Rates
- Material Costs
- Machine Time
- Operators
- Scrap
- Profit or Loss

In addition, the E2 Shop System contains the following Job Cost reports:

- Billing Rate Summary
- Estimated vs. Actual Summary
- Work-in-Process Summary
- Cross Reference Part Descriptions
- Margin Summary
- Outside Job Cost Summary



*“We’re proud to say that our business is ‘on the grow’ and that E2 has helped with that.”*

*Pam Sjolund - Accutech Machine*

# Contact Management

E2 Contact Management is a completely integrated tool that improves customer service through the sharing of information.

How many times has someone in the shop had a conversation with a customer regarding a job, yet failed to relay that information to the appropriate personnel? Tired of seeing those yellow post-it notes on everyone’s desk and computer screen? How is your shop following up on sales quotes? What type of relationship tracking do you have with your vendors?

Imagine having an office and shop calendar with everyone working on the same page, pulling in the same direction.

The key to superior customer service is having everyone: office/shop personnel, customers, and vendors all on the same page. E2 Contact Management gives you the competitive advantage when it comes to customer service.



# PocketView

PocketView is QuickView, real-time labor reporting, Hot Spots, messaging and inventory transfers, and inventory adjustments all rolled into one. The PocketView software runs on a Pocket PC handheld device.

PocketView gives users the ability to walk the shop floor, yet still have access to critical business information.

Three buttons on the PocketView main screen allow data entry: Data Collection, Inventory Adjustments

and Inventory Transfers. All other buttons are view-only, just like in QuickView.



# WebView

WebView utilizes the power of the internet so your customers can check on quotes, jobs, shipments and all other business critical information 24 hours a day, 7 days a week, 365 days a year. WebView can be incorporated into your website and customized to fit your exact specifications.

Increase customer satisfaction by giving your customers the information they need, when they need it.

Since customers will be using the internet, that means less phone calls for your people, which means less interruptions in their day, which means they are working more efficiently.

**Data Collection** - Time and attendance, job labor reporting, work queue.

**Job Status** – View all job activities and history.

**Part Inquiry** – View part and material history.

**Vendors and Customers** – View all contact information, orders, shipments, and accounting history.

**Inventory Adjustment** – Dramatically reduce the time and effort it takes to perform a physical inventory.

**Inventory Transfers** – Post raw material to jobs.

**P.O. Status** – View all purchasing activity and history.

**Executive Overview** – View critical business information such as cash balances, accounts receivable, and accounts payable.

**Hot Spots** – Hot Spots defined in E2 for a particular user can be accessed.

**Messages** – Send or receive E2 internal messaging. Triggers created in E2 can generate messages that are accessible through PocketView.

“*I used to run my shop on the ‘Sneaker’ network, constantly running from the office to the shop. Now I have all the information right at my fingertips.*”

Dennis Whitaker -  
All-Type Welding & Fabrication





*Phillip M. Hutchinson  
President & CEO*



*Robert Lewis  
Chief Financial Officer*



*Rich Ehemann  
Chief Technology Officer*



*Greg Ehemann  
Vice President of Sales*



*Paul Ventura  
Vice President of Marketing*



*Angie Asher  
Vice President of Services*

**T**hank you for your interest in Shoptech Software, the largest privately held software provider in the nation.

Through this brochure and our live demonstrations, you will see, feel and experience the most comprehensive, user-friendly and intuitive shop control package on the market. After all, our product began its development process in 1984 in a job shop, by shop people. The E2 Shop System is now used in over 3,000 shops worldwide.

Our simple philosophy remains the same today as the day we opened our doors:

- Employ the most knowledgeable and experienced industry professionals to deliver and service a product that is powerful yet flexible.
- Continually invest in current and emerging technologies.
- Stand behind our products with exceptional customer support and service.

The same individuals that created our product in a real life job shop continue to develop and improve our software today. Our industry experts share over 50 years of combined experience in the manufacturing industry. Simply put, we know and understand the needs of today's shop owner better than anyone else. *We've even got the chips in our boots to prove it!*

Now that you have had an opportunity to read through our brochure, we invite you to arrange a personalized demonstration of our product with your area sales consultant. We also invite you to visit us on the web at [www.shoptech.com](http://www.shoptech.com) for the most complete and current information about our company.

We sincerely appreciate your interest in our products and look forward to establishing a mutually rewarding relationship with your company in the near future.

**Shoptech. The Authority on Shop Floor Control.**

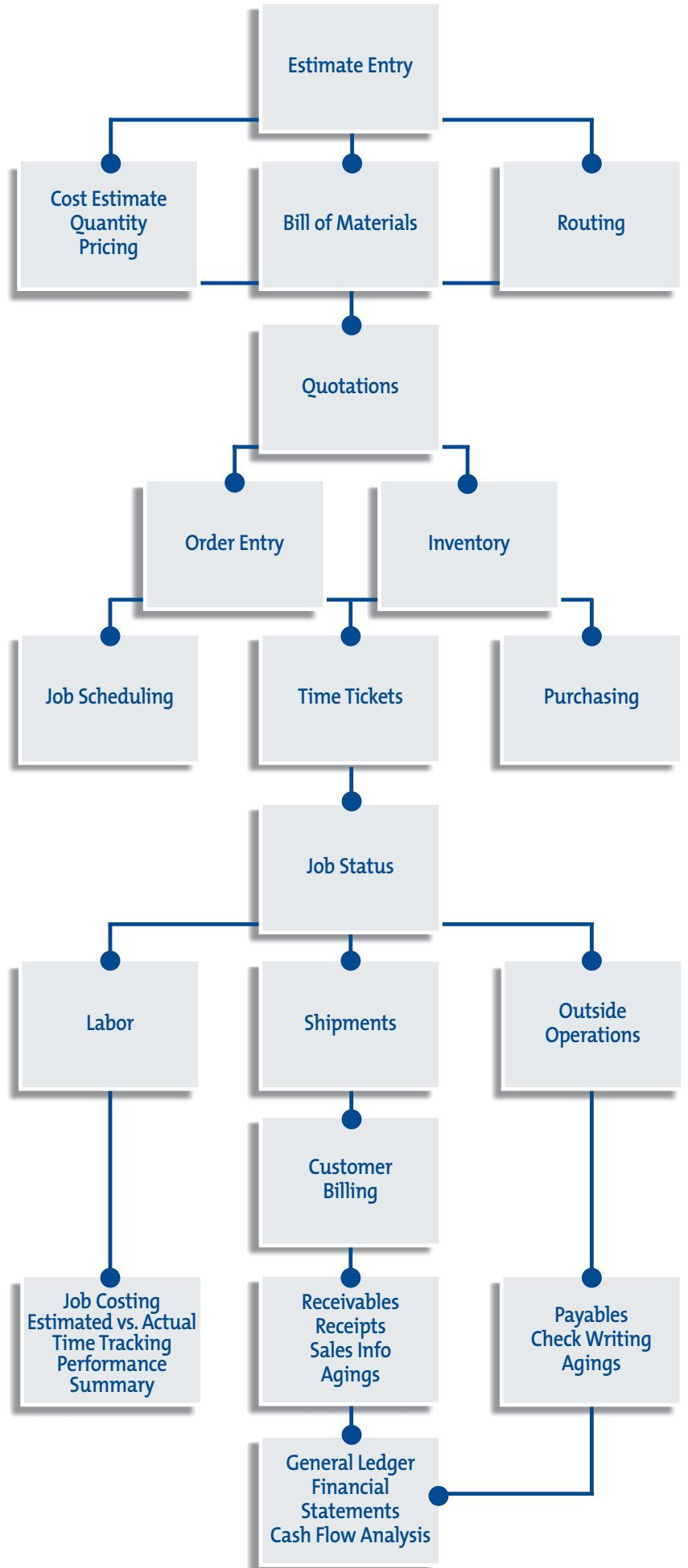
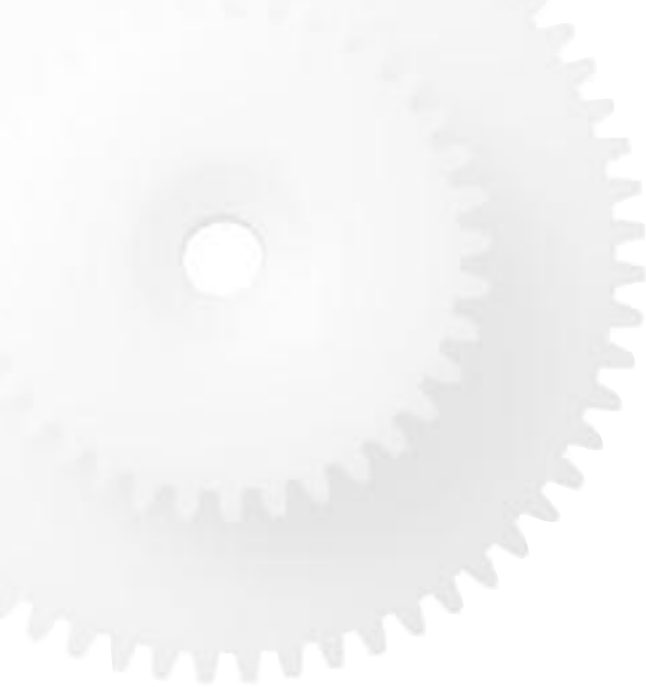
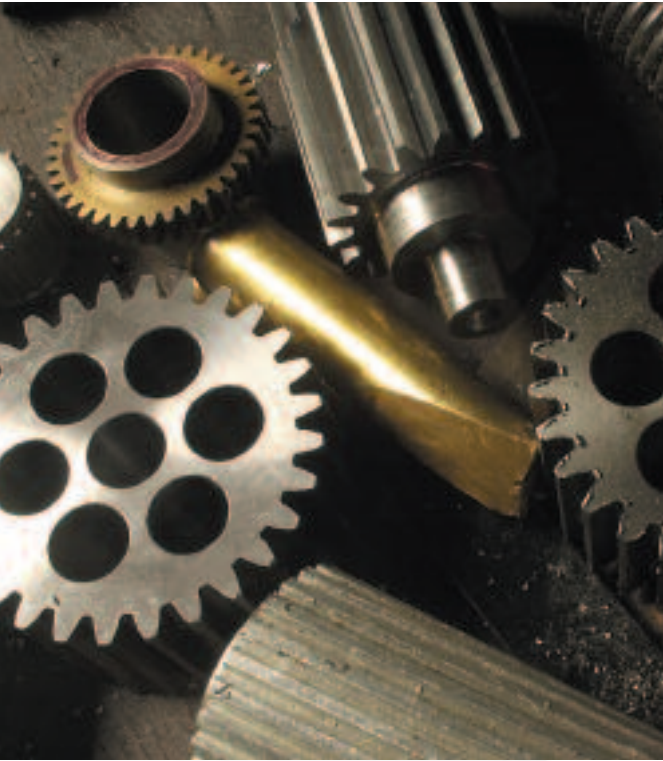
Very truly yours,

The Executive Team  
Shoptech Software





1-800-525-2143



shoptech™  
Software

www.shoptech.com